

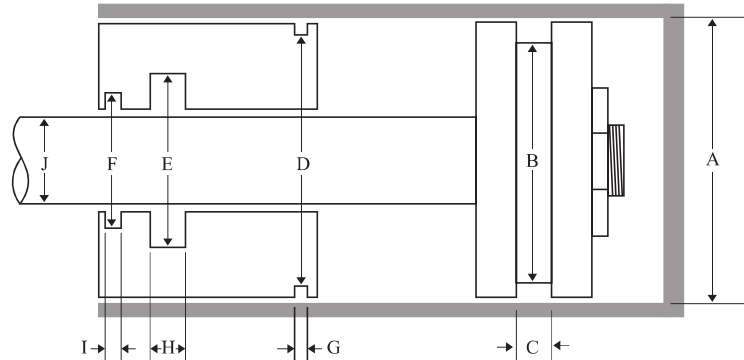
HOW TO SIZE GROOVE DIMENSIONS FOR SEALS



HOW OFTEN HAVE YOU RECEIVED A CYLINDER FOR REPAIR AND THE SEALS WERE . . .

- MISSING
- COOKED
- INCORRECT
- EXTRUDED
- NIBBLED
- TWISTED
- ROLLED
- SPLIT
- WORN OUT

The chart below can be used by your counter people, repair shops, or sales people, to determine the seals you need. Note the dimensions, refer to your SCS, Inc. Catalog and call our sales staff with your information. If the part number(s) you need can't be located in the catalog, our Sales personnel will be glad to help you .



Call us TOLL FREE! 1-877-905-SEAL (7325)

FOR A PROFESSIONAL ANALYSIS OF SEAL FAILURE, SEND YOUR DAMAGED SEALS TO OUR ENGINEERING DEPARTMENT.

PISTON SEALS AND BEARINGS

DIAGRAM REFERENCE

A = Bore = Seal O.D.
 B = Groove Diameter = Seal I.D.
 C = Groove Width = Nominal Seal Width

DIMENSIONS

ROD SEALS AND BEARINGS

DIAGRAM REFERENCE

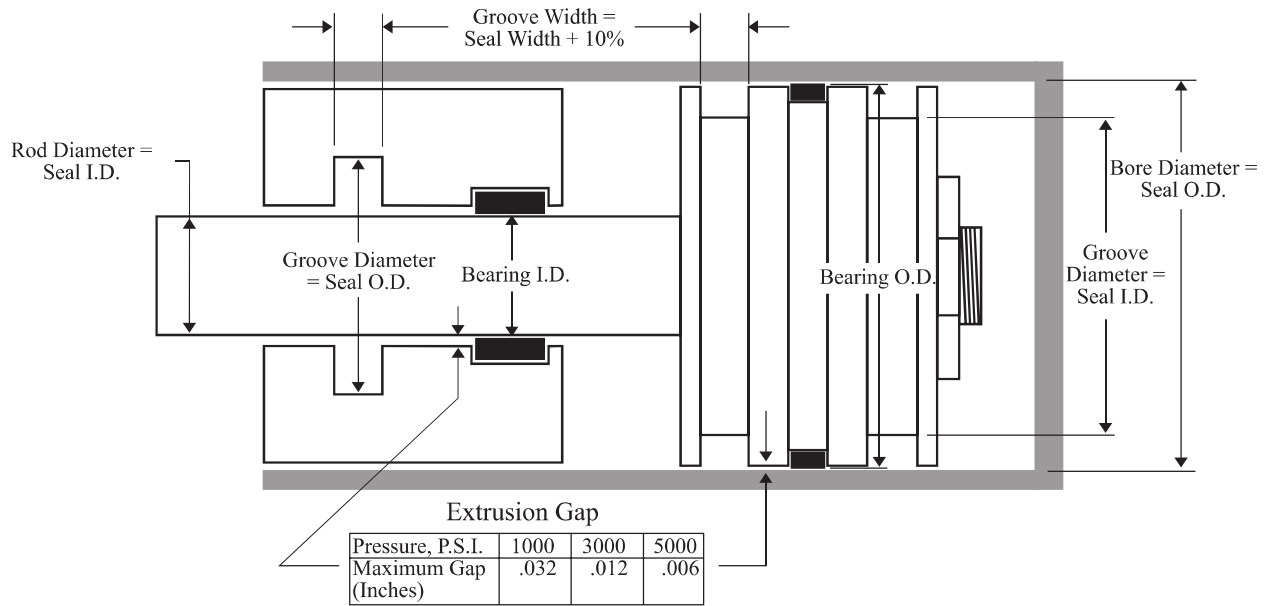
D = Gland Groove Diameter = Seal I.D.
 E = Rod Seal Groove Diameter = Seal O.D.
 F = Wiper Groove Diameter = Wiper O.D.
 G = Gland Groove Width = Nominal Seal Width
 H = Rod Seal Groove Width = Nominal Seal Width
 I = Wiper Groove Width = Base Width
 J = Rod Diameter = Seal & Wiper I.D.

DIMENSIONS

COPY FOR SHOP & COUNTER USE



GROOVE DIMENSIONS FOR URETHANE U-SEALS



ROD AND ROD GROOVE DIMETERS

ROD DIAM RANGE, IN.	ROD DIAM. TOLERANCE	GROOVE DIAM TOLERANCE	MAX DIAMETRAL CLEARANCE		
			1000 PSI	3000 PSI	5000 PSI
.125 - .687	+ .0 / -.002	+ .004 / -.0	.008	.006	.004
.750 - 2.875	+ .0 / -.003	+ .008 / -.0	.012	.008	.004
3.000 - 7.000	+ .0 / -.004	+ .010 / -.0	.014	.010	-
7.000 - 7.750	+ .0 / -.005	+ .011 / -.0	.016	.010	-
8.000 - 9.500	+ .0 / -.005	+ .012 / -.0	.016	-	-
10.000 - 15.000	+ .0 / -.006	+ .015 / -.0	.016	-	-

BORE AND PISTON GROOVE DIMETERS

BORE DIAM RANGE, IN.	BORE DIAM. TOLERANCE	GROOVE DIAM TOLERANCE	MAX DIAMETRAL CLEARANCE		
			1000 PSI	3000 PSI	5000 PSI
.750 - 1.062	+ .003 / -.0	+ .0 / -.004	.010	.008	.004
1.125 - 1.625	+ .003 / -.0	+ .0 / -.005	.010	.008	.004
1.750 - 2.500	+ .003 / -.0	+ .0 / -.007	.012	.008	.004
2.625 - 2.875	+ .003 / -.0	+ .0 / -.008	.012	.008	.005
3.000 - 3.500	+ .004 / -.0	+ .0 / -.008	.014	.010	-
3.625 - 5.625	+ .004 / -.0	+ .0 / -.009	.014	.010	-
5.750 - 6.750	+ .004 / -.0	+ .0 / -.010	.014	.010	-
7.000 - 8.500	+ .005 / -.0	+ .0 / -.011	.016	.010	-
9.000 - 11.000	+ .005 / -.0	+ .0 / -.011	.016	-	-
12.000 - 16.000	+ .006 / -.0	+ .0 / -.012	.018	-	-