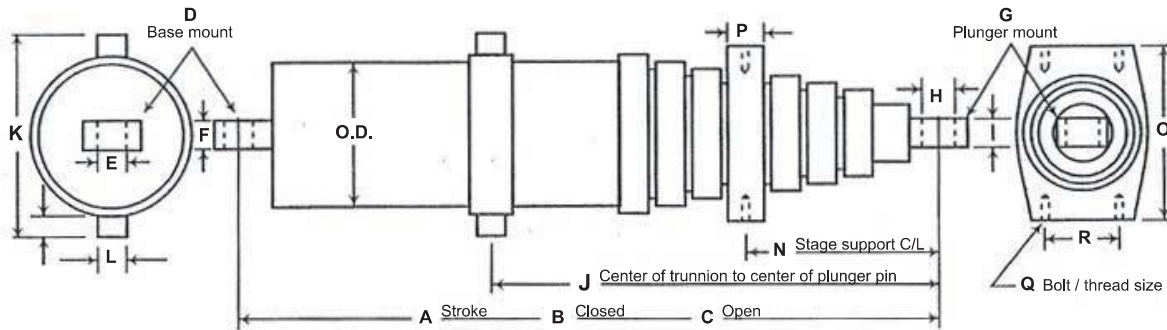




TELESCOPIC CYLINDER APPLICATION DATA FORM



Cylinder application _____

Single - or Double-acting _____ System operating pressure Normal ____ Max. ____

O.D. of body _____ Is there a relief valve in system ____ Setting ____

O.D. largest moving stage _____ System flow in G.P.M. Min. ____ Max. ____

Number of moving stages _____ System operating temp. Normal ____ Max. ____

Chrome or non-chrome stages _____ Fluid type _____

Mounting conditions ___Vert. ___Horz. ___Incline angle Load holding requirements _____

Any side or eccentric loading possible _____ Environmental condition _____

A : Total stroke _____ J : Plunger pin to trunnion C/L (if applicable) _____

B : Closed length _____ K : Trunnion overall width _____

C : Open length _____ L : Trunnion lug diameters _____

D : Base mount type or code _____ M : Trunnion lug lengths _____

E : Base pin diameter _____ N : Plunger pin to stage support (if applicable) _____

F : Base mount width _____ O : Stage support width _____

G : Plunger mount type or code _____ P : Stage support thickness _____

H : Plunger pin diameter _____ Q : Stage support bolt & thread size _____

I : Plunger mount width _____ R : Stage support bolt locations & C/L's _____

Special mounting (if applicable) _____

Extend port size and type _____ Extend port location _____

Retract port size and type _____ Retract port location _____

Special features or comments _____

Requested by: Firm _____ Current Quan. _____

Address _____ Future Quan. _____

City _____ State _____ Zip _____

Phone _____ Fax _____

Contact _____

TECHNICAL INFORMATION



Seal & Cylinder Source, Inc.
44250 North Avenue
Clinton Township, MI 48036

NORTH AMERICA
PHONE 1-586-791-9001
FAX 1-586-791-9033

SALES OFFICE HOURS
8 A.M. TO 8 P.M. EASTERN TIME
www.sealandcylinder.com

WORLDWIDE
PHONE 1-877-905-SEAL
sales@sealandcylinder.com