

SNOW PLOW CYLINDERS

Snow Plow Cylinders

SNOW PLOW

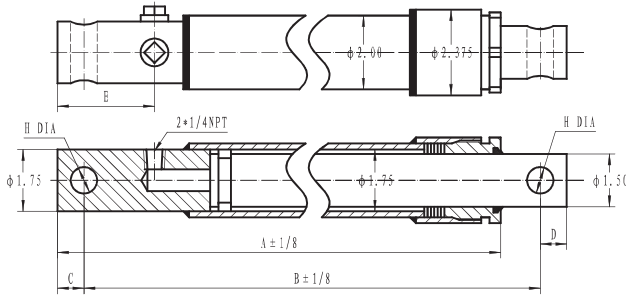
2500 PSI SINGLE ACTING CYLINDERS



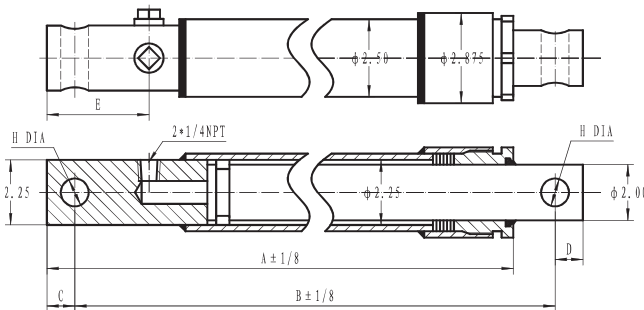
FEATURES:

- Ductile iron piston.
- Ductile iron gland, drilled oil passages.
- Honed steel tube, precision finished for extended seal life.
- High tensile, hard chrome plated rod.
- Tube Seal: O-ring
- All Seals: Manufactured to US specifications.

CYLINDERS



PART NUMBER	DESCRIPTION	A	B	C & D	E	H	WT LBS.
HSPM-1506-0625	MYER 1.5" X 6"	11-7/8	12.00	11/16	2.00	5/8	12
HSPM-1510-0625	MYER 1.5" X 10"	15-7/8	16-1/4	11/16	2.00	5/8	14
HSPM-1512-0625	MYER 1.5" X 12"	17-7/8	18.00	11/16	2.00	5/8	15
HSPW-1506-0750	WESTERN 1.5" X 6"	12-5/8	13.00	11/16	2-3/4	3/4	12
HSPW-1508-0750	WESTERN 1.5" X 8"	14-5/8	15-1/4	11/16	2-3/4	3/4	13
HSPW-1510-0750	WESTERN 1.5" X 10" X 3/4"	16-5/8	17-1/4	11/16	2-3/4	3/4	14
HSPW-1510-1000	WESTERN 1.5" X 10" X 1"	16-5/8	17-1/2	11/16	2-3/4	1.00	14
HSPA-1510-0750	ARTIC 1.5" X 10"	16-5/8	17.00	3/4	2-3/4	3/4	14
HSPA-1512-0750	ARTIC 1.5" X 12"	18-5/8	19.00	3/4	2-3/4	3/4	15
HSPF-1512-1000	FISHER 1.5" X 12"	18-7/16	19-3/8	3/4	2-5/8	1.00	15
HSPF-1510-1000	FISHER & DIAMOND 1.5" X 10"	16-3/8	17-1/4	3/4	2-11/16	1.00	14
SEAL KIT NUMBER	DESCRIPTION	LIST PRICE					
HSP-SP150K	1-1/2" ROD CYLINDER	\$ 10.73					
HSP-SP200K	2" ROD CYLINDER	12.57					



PART NUMBER	DESCRIPTION	A	B	C & D	E	H	WT LBS.
HSPM-2012-0625	MYER 2.0" X 12"	17-1/4	18.00	3/4	2-3/16	5/8	18
HSPW-2016-1000	WESTERN & DIAMOND 2.0" X 16"	22-5/8	23-5/8	11/16	2-3/4	1.00	21
HSPW-2006-0750	WESTERN 2.0" X 6"	12-5/8	13-3/16	3/4	2-3/4	3/4	13
HSPW-2010-1000	WESTERN 2.0" X 10"	16-5/8	17-1/4	11/16	2-3/4	1.00	16
HSPF-2016-125	FISHER 2.0" X 16"	22-1/2	23-1/4	7/8	2-3/4	1-1/4	20

NORTH AMERICA
PHONE 1-586-791-9001
FAX 1-586-791-9033

SALES OFFICE HOURS
8 A.M. TO 8 P.M. EASTERN TIME
www.sealandcylinder.com

WORLDWIDE
PHONE 1-877-905-SEAL
sales@sealandcylinder.com